

CERTIFICATE OF LOCATION OF GOVERNMENT CORNER

NE Corner of Section 23, Township 105, Range 43, _____ P.M.

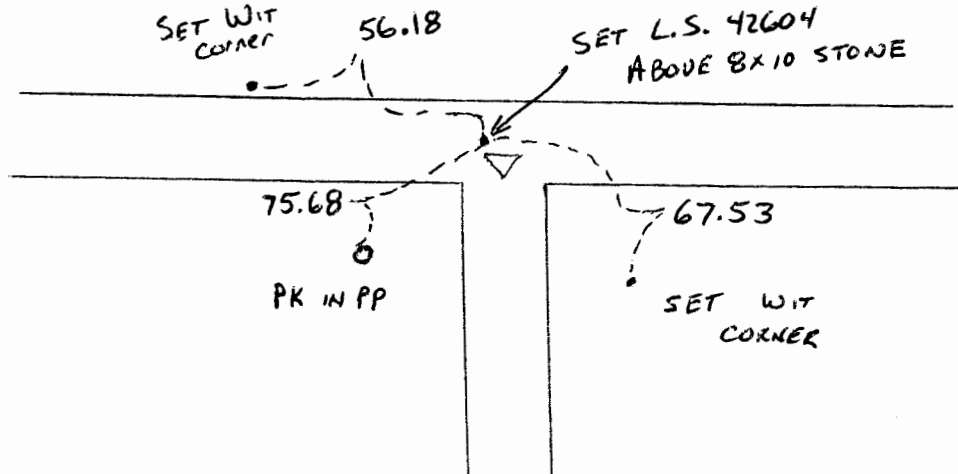
STATE OF MINNESOTA, County of Murray

At the corner location shown on the sketch:

On _____ found a STONE 3' WEST of CLW on CLN
Date

left monument as found, lowered monument, removed monument (explain)

On 8/9/2006 placed a 1/2" PIPE L.S. 42604 3' west of ☐
Date



I hereby certify that this document and the data contained herein was prepared by me or under my direct supervision.

Paul H. J. 1-18-07
Signature Date

Registration No. 42604

Land Surveyor, Professional Engineer

County Surveyor, County Engineer

OFFICE OF THE REGISTER OF DEEDS
County of _____

I hereby certify that this document was filed in the Reg. of Deeds office at _____ M on the _____ day of _____ A.D., 20 _____

Register of Deeds _____

By _____, Deputy

DOCUMENT NO. _____

FEB - 2 2007